

Creating Templates on EasyRx

Note: Create templates for specific doctors, title them accordingly. Perhaps save a spreadsheet with all the titles of your templates. Utilizing templates is optional, but long term can be a huge time saver.

1. Select Templates



Dashboard | Patients | EasyRx 3D | **Templates** | Scripts | Labs | Q

2. Select "New Template"

Dashboard | Patients | EasyRx 3D | **Templates** | Scripts | Labs | Q

NEW TEMPLATE

3. Utilize the Search Bar to search for necessary parts of the appliance you are needing for the template.



Dashboard | Patients | EasyRx 3D | Te

Prescription Workspace

Click on category to expand, then click and drag part to canvas.
 Search for a part, appliance, or te... Q
 Search Results

Parts | Appliances | Templates
 Removables
 Fixed
 Functionals
 Implants
 Dentures
 General Dental
 Restorative

Create Prescription Template

Template Name

ASSIGN TO LAB

3D Band

3D Band

3D Band

3D Band

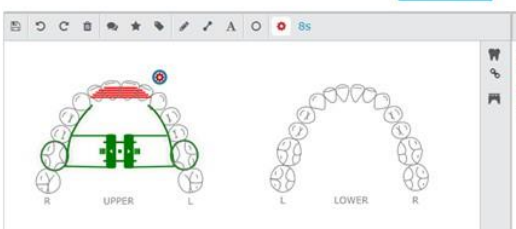
4. Add your parts, and click "comment" on a part and add any necessary comments to each part regarding preferences. (optional)

Create Prescription Template

Template Name

3d banded RPE with Anterior Bite Plate

ASSIGN TO LAB

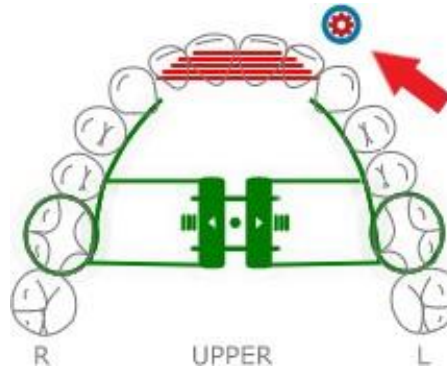


PARTS USED	RESETS/MISSING	TEMPLATES	MODELS	ALIGNERS	IDB
Band				edit	comment delete
Band				edit	comment delete
RPE					
RPE				edit	comment delete
Anterior Bite Plate				edit	comment delete

For Example:



5. You can also add preferences or specifications to any parts with a cog & wheel. (optional)



6. Once completed, title your Rx template.

Create Prescription Template

Template Name

3d banded RPE with Anterior Bite Plate

7. Hit save. And your template is complete.

Template Name
3d banded RPE with Anterior Bite Plate

ASSIGN TO LAB

Part Options

- Upper
 - RPE
 - Anterior Bite Plate, left 2
- Lower
 - None

PARTS USED: RESETS/MISSING TEMPLATES MODELS ALIGNERS UNLOCKS IDB

Part Name	edit	comment	delete
Band	<input checked="" type="checkbox"/>	<input type="checkbox"/>	<input type="checkbox"/>
Band	<input checked="" type="checkbox"/>	<input type="checkbox"/>	<input type="checkbox"/>
RPE	<input checked="" type="checkbox"/>	<input type="checkbox"/>	<input type="checkbox"/>
RPE	<input checked="" type="checkbox"/>	<input type="checkbox"/>	<input type="checkbox"/>
Anterior Bite Plate	<input checked="" type="checkbox"/>	<input type="checkbox"/>	<input type="checkbox"/>

TEMPLATE DEFAULTS

Cancel

SAVE